

**In This Issue ...**

- \* Hearing Loss Affects All Ages
- \* Best of the Best Voting Begins

**Best of the Best Voting Begins**

Thank you for voting us as Best of the Best Hearing Care for four years. We know you have choices for hearing care, and we work hard to earn your trust.

We would appreciate your vote again when you vote for Best of the Best 2018 local businesses.

Voting ends August 16th. Thank you for your continued support!

**VOTE FOR US!**



**CATEGORY** Best Hearing Care

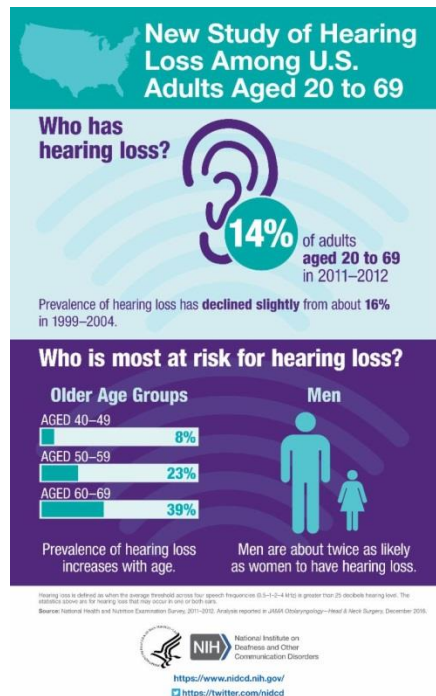
Place your vote at [wakeweekly.com](http://wakeweekly.com)

or mail in the entry form printed in the paper

## Hearing Loss Affects All Ages

While it's true that the prevalence of hearing loss increases as we age, you might be surprised to know just how common it is in younger adults. Genetics and noise exposure are the leading causes for people younger than 60. But diabetes and cardiovascular disease are not uncommon in younger adults, and both of these health conditions can lead to hearing loss. Even mild hearing losses can make communication difficult on the job and socially.

### Hearing Loss Among U.S. Adults Aged 20 to 69



## Ask the Expert

**Q: Our elderly mother wears hearing aids but she still cannot understand some of us. What can we do?**

**A:** First be sure the hearing aids are working properly and that her ears are not blocked with wax. Speak to her slowly and distinctly. Fast speech is not clear speech. Older brains don't process quickly, so allow her time to respond. Talk directly to her, not from a distance, and turn off any competing sounds such as TV. She will appreciate your efforts to communicate with her.

## Hear What Our Patients Are Saying ...

*"The entire process - from hearing test to fitting - was top notch. Dr. Marquis and staff go "above and beyond" to make sure you are comfortable with your hearing aid." JS*